

Initial commissioning

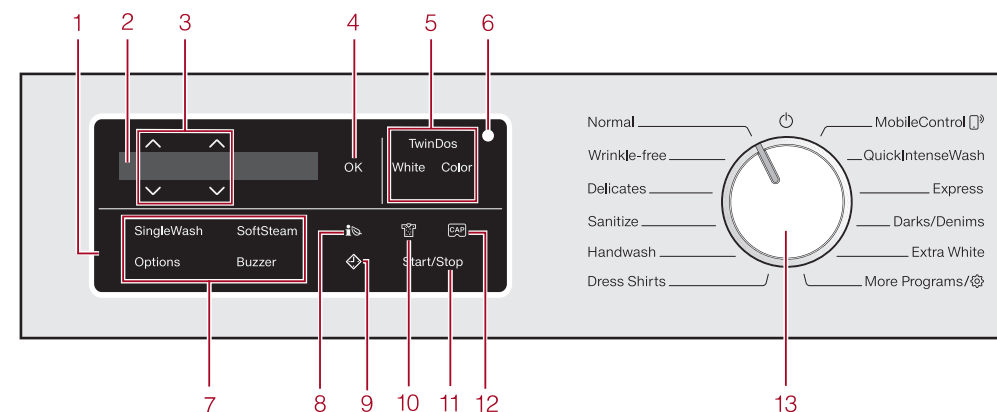
⚠ Before using the machine for the first time, ensure that it is correctly installed and connected.
Please read the separate Operating Instructions supplied with the appliance

⚠ Failure to remove the shipping struts can result in damage to the washing machine and to adjacent cabinetry or appliances.
Remove the shipping struts as described in "Installation".

Switching on the washing machine

- Turn the program selector to the Normal program.
The welcome tone will sound and the welcome screen will light up.
The display will now guide you through the initial commissioning, which is divided into 5 steps.
For further information please refer to the separate Operating Instructions supplied.

Operation



Operating the sensor buttons

The sensor buttons react to fingertip contact. Selection is possible as long as the respective sensor button is illuminated. **If a sensor button is brightly lit, this means: currently selected**
If a sensor button is dimly lit, this means: selection possible

- 1 Control field**
The control field consists of a display and various sensor buttons.
- 2 Display**
Values are displayed and/or selected in the display.
- 3 Sensor buttons** $\wedge \vee$
The values in the display can be changed with the sensor buttons $\wedge \vee$.
- 4 OK sensor button**
Confirm the selected values with the OK sensor button.
- 5 TwinDos sensor buttons**
Deactivate or activate the automatic detergent dispensing via the TwinDos sensor button.
- 6 Optical interface**
for service technicians.
- 7 Sensor buttons for extras**
You can supplement the wash programs with extra options.
- 8 Sensor button** info
You can use the info sensor button to view an energy and water consumption forecast for the selected wash program.
- 9 Sensor button** \diamond
The sensor button \diamond starts the delay start function.
- 10 Sensor button** lock
For selecting the level of soiling.
- 11 Start/Stop sensor button**
Touching the Start/Stop sensor button starts the selected program or cancels a program that has already been started.
- 12 Sensor button** cap
Activates cap dosing via the detergent dispenser drawer.
- 13 Program selector**
For selecting programs and for switching off the machine.

Environmentally friendly washing

- Make use of the maximum load of the respective wash program.
- When smaller amounts of laundry are washed, the washing machine's automatic load control system will reduce the amount of water and energy used.
- Use the *Express* program for small, lightly soiled loads.
- Modern detergents make it possible to wash at lower temperatures. Using the corresponding temperature settings will save energy.
- For precise dispensing, use automatic detergent dispensing.
- Select the highest possible spin speed for the wash program to save energy in the subsequent tumble dryer cycle.

Washing

1. Preparing the laundry

- Empty all pockets.
- ⚠ Foreign objects (e.g. nails, coins, paper clips, etc.) can cause damage to garments and components in the machine.

- Sort the laundry by color and by care label. Most garments have a textile care label in the collar or side seam.
- Pre-treat stains and badly soiled areas (see the Miele website for advice).

2. Selecting a program

- Turn the program selector to a program. The interior drum lighting will come on.

Program selection

There are three possible ways to select a program:

1. Selecting the standard programs with the program selector dial

- Turn the program selector to the required program. The selected program will be shown in the display. This will then be replaced by the standard display.

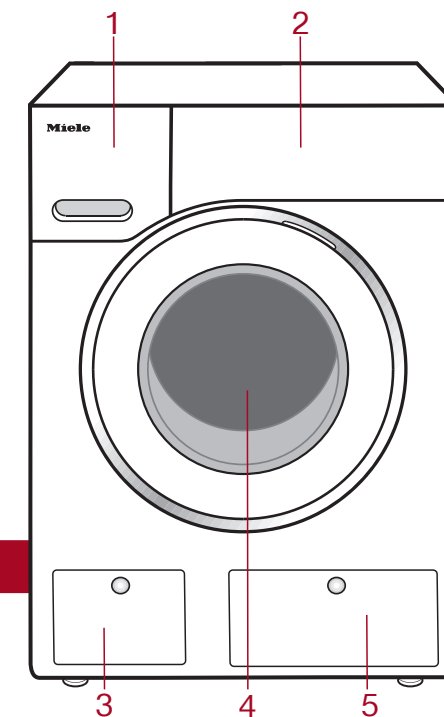
2. Selecting additional programs by setting the program selector to the "More programs/@" position and the display.

- Turn the program selector to the More programs/@" position. The display shows: Outdoor
- Touch the $\vee \wedge$ sensor buttons until the program you want appears in the display.
- Confirm the program with the OK sensor button.

3. Selecting the programs via the MobileControl program selector position and the Miele@mobile app

- Turn the program selector to the *MobileControl* position.
- Touch the "Start/Stop" sensor button.

The washing machine can now be operated via a mobile device together with the Miele@mobile app.



- 1 Detergent dispenser drawer**
- 2 Control panel**
- 3 Drain filters**
- 4 Door**
- 5 TwinDos dispensing**

3. Loading the washing machine

Check the drum for pets or foreign objects before loading it with laundry.

Opening the door

- Take hold of the door and pull it open.
- Loosely load the laundry in the drum.

Closing the door

- Make sure that no items are caught between the door and the seal.
- Shut the door.

4. Selecting program settings

Selecting a temperature/spin speed

- Touch the $\vee \wedge$ sensor buttons above or below the temperature or spin speed value in the display until the temperature/spin speed you want appears in the display. Confirm with the OK sensor button.

Selecting an extra option

There are two ways of selecting extras.

- 1. Directly above the sensor buttons**
 - Touch the sensor button for the desired extra. It then lights up brightly.
- 2. Via the Extras sensor button and the display**
 - Touch the *Extras* sensor button.
 - The following appears in the display: No Extra ✓
 - Touch the sensor buttons until the extra you want appears in the display and confirm this with the OK sensor button.

Adding detergent

EcoFeedback

You can use the info sensor button to view an energy and water consumption forecast for the selected wash program.
■ Touch the info sensor button. The estimated energy and water consumption levels will be displayed as a bar chart.

Level of soiling

You can specify the level of soiling of the load.
– info lightly soiled
No visible soiling or stains
– info normal
Visibly dirty and / or just a few slight stains
– info heavily soiled
Soiling and/or stains clearly visible. Pre-wash starts automatically.

Delay start/SmartStart

Delay start

With the delay start function, you can delay the start of the program. The start of the program can be delayed from 15 minutes up to a maximum of 24 hours.

SmartStart

With the SmartStart function you can define a time period during which your washing machine will be started automatically by a signal.

5. Adding detergent

There are several options for adding detergent to the washing machine.

TwinDos

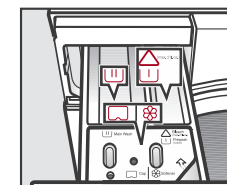
TwinDos dispensing is automatically activated on all programs in which dispensing is possible.
Changing TwinDos dispensing
You can change the suggested color composition of the laundry.
■ Touch the White or Color sensor button.
Deactivating TwinDos dispensing
■ Touch the sensor button TwinDos. The OK sensor button will light up dimly and dispensing is deactivated.

Detergent dispenser drawer

This washing machine requires high efficiency (HE) detergent



Ensure that TwinDos dispensing is deactivated.



- Pull out the detergent drawer and add detergent to the compartments.
- $\triangle \sqcup$ Chlorine bleach for removing stains or liquid detergent for the pre-wash
- $\sqcup \sqcup$ Detergent for the main wash, including Soak if selected
- \otimes / \square Fabric softener, liquid starch or capsules

Using chlorine bleach

⚠ Chlorine bleach is a very aggressive substance. It can cause damage to the colors and fibers of textiles. Only use chlorine bleach on suitable textiles.

Chlorination **must** be activated in the settings before chlorine bleach is first used.
Dispensing chlorine bleach
Follow the manufacturer's instructions on the packaging.

The extra option *pre-wash* must **not** be selected.

- Pour max. ¼ cup (60 ml) of chlorine bleach into the $\triangle \sqcup$ chamber. The chlorine bleach is added automatically 10 minutes before the end of the main wash.

Using powder detergent

The detergent dispenser drawer contains an insert for liquid detergent in the $\sqcup \sqcup$ compartment. This insert must be removed to use powder detergent. Using powder detergent in the $\triangle \sqcup$ compartment is **not** possible.

CapDosing

Three different types of capsule are available:

- \otimes Fabric care (e.g., fabric softener, proofing agent)
- $\triangle \sqcup$ Additives (e.g., detergent enhancers)
- \diamond Detergent (for the main wash only)

Each capsule contains the correct amount for one wash cycle.

Activating CapDosing

- Touch the cap sensor button. See "Detergent" in the Operating Instructions for more information.

6. Starting the program - End of the program

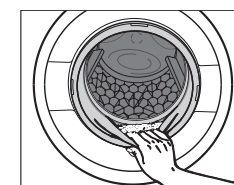
Starting a program

- Touch the flashing *Start/Stop* sensor button. The door will lock (will appear in the display to show this) and the wash program will start.

Program end

- The door is still locked during the Anti-crease phase and the following will appear alternately in the display:
 \diamond End / Anti-crease and
 info Press Start / Stop
- Touch the *Start/Stop* sensor button. The door will be unlocked.
- Pull open the door.
- Remove the laundry.

Check that all items have been removed from the drum.



- Check the folds in the door seal for any small articles. Leave the door slightly open to allow the drum to dry.
- Turn the program selector to the \diamond position. This switches the washing machine off.
- If applicable, remove the used capsule from the detergent dispenser drawer. Leave the detergent dispenser drawer slightly open to allow it to dry.

Extra options

Extra options

You can supplement the wash programs with extra options.

SingleWash

For washing a very small load (< 2.2 lb/1 kg) in a wash program. The wash duration is reduced.
Please note!
Add only liquid detergent manually and use the proper amount. Use a **maximum of 50%** of the specified amount of detergent for ½ load. The use of bleach is **not** possible.

SoftSteam

In order to reduce creasing, the laundry undergoes a smoothing process at the end of the program. Reducing the maximum load by 50% will give a better result. Please note the load information in the display. Small loads give a better result.

Without SoftSteam		With SoftSteam
Full load	→	Half load
Half load	→	Small load
Small load	→	Very small load

The garments must be suitable for drying in a tumble dryer info info and suitable for ironing info info .

Buzzer

A buzzer sounds at the end of the program. The buzzer will sound until the washing machine is switched off.

Pre-wash

For laundry with large amounts of dirt, e.g., dust and sand.

Pre-wash and Bleach are **not** possible. The bleach is added too early.

Only liquid detergent may be added to the $\triangle \sqcup$ chamber of the detergent dispenser drawer. Powder detergent clogs up the chamber and water can escape from the detergent dispenser drawer.

Gentle

Drum rotation and wash duration are reduced. Lightly soiled textiles are washed more gently.

Eco

Extra Eco helps to save energy. The wash temperature is reduced and the wash duration is increased in return. The wash program continues to provide a deep clean.

Rinse plus

An additional rinse cycle can be activated to give a more thorough wash result.

Soak

For heavily soiled textiles with stains. A duration of between 30 minutes and 5 hours can be chosen for the soak process. See "Settings" for more information. The factory default setting is 30 minutes.

Program guide

Temperature		Spin speed		Laundry type	
Cottons	hot +; hot; warm + ; warm; cold	Max.;		Full load (17.6 lb/8 kg)	Cotton, linen, and mixed fiber textiles made of both cotton and linen.
Wrinkle-free	hot +; hot; warm + ; warm; cold	High ; Med; Slow;		Half load (8.8 lb/4 kg)	Synthetic or mixed fiber fabric, or wrinkle-free cotton.
Delicates	hot +; hot; warm + ; warm; cold	Med ; Slow;		Small load (6.6 lb/3 kg)	For fine textiles made from synthetic fibers.
SaniWash		Max.; High ;		Full load (17.6 lb/8 kg)	Cotton or linen fabrics with direct skin contact or for which special hygiene requirements apply.
Sanitize		High ; Med; Slow;		Small load (4.4 lb/2 kg)	For fine textiles which are only suitable for hand washing.
Handwash	warm + ; warm; cold	High ; Med; Slow;		Small load (4.4 lb/2 kg)	Pre-treat collars and cuffs depending on the level of soiling.
Dress Shirts	hot +; hot; warm + ; warm; cold	Med ; Slow;		Full load (11 lb/5 kg)	For lightly or moderately soiled textiles which are also suitable for washing in the Cottons program.
QuickIntenseWash	hot +; hot; warm +	Max.; High; Med; Slow;		Half load (7.7 lb/3.5 kg)	Cotton textiles that have hardly been worn or are only lightly soiled. Selecting the Light level of soiling will reduce the washing time by 10 minutes.
Express	warm +; warm ; cold	High ; Med; Slow;		Small load (4.4 lb/2 kg)	Black and dark garments made from cotton, mixed fibers, and denim.
Darks/Denims	warm +; warm ; cold	High ; Med; Slow;		Full load (17.6 lb/8 kg)	For white textiles made of cotton or linen without special hygiene requirements.
Extra White	hot +; hot; warm + ; warm; cold	Max.; high;		Small load (5.5 lb/2.5 kg)	Performance outerwear (e.g., jackets and trousers) made from membrane fabric.
Outdoor	warm +; warm; cold	Med ; Slow;		Full load (13.2 lb/6 kg)	Table linen and drapes made of cotton and linen.
Table Linen/Drapes	hot +; hot; warm +; warm; cold	High ; Med; Slow;		Half load (6.6 lb/3 kg)	Sportswear such as jerseys and leggings, as well as microfiber and fleece garments.
Sportswear	hot +; hot; warm +; warm; cold	High ; Med; Slow;		Small load (4.4 lb/2 kg)	Wool or wool-blend textiles.
Woolens	warm; cold	High ; Med; Slow;		Very small load (2.2 lb/1 kg)	Silks and other hand-washable textiles with no wool content.
Silks	warm; cold	Slow ;		Small load (5.5 lb/2.5 kg)	Treating microfiber fabric, ski wear, or Table Linens made from mainly synthetic fibers to provide a finish which is resistant to water and dirt.
Proofing	warm; cold	High; Med ; Slow;		Full load (13.2 lb/6 kg)	Baby Clothes, baby towels, bath gowns, towelings items, bibs made from cotton.
warm +		High; Med; Slow;		Full load (11 lb/5 kg)	For linen or cotton towels used for personal hygiene.
Baby Clothes	hot +; hot; warm + ; warm; cold	High ; Med; Slow;		Small load (4.4 lb/2 kg)	Jackets, sleeping bags, pillows, and other Down Filled items.
Towels	hot +; hot; warm+ ; warm; cold	Max.; High ; Med; Slow;			2 pillows (16" x 31" / 40 x 80 cm) or 1 pillow (31" x 31" / 80 x 80 cm)
Down Filled Items	hot +; hot; warm+ ; warm; cold	High ; Med; Slow;			Synthetic-filled washable pillows
Pillows	hot +; hot; warm + ; warm; cold	High ; Med; Slow;			

Detergent

Miele recommended detergents

The Miele detergents have been developed by Miele especially for the Miele washing machine. You can order the Miele detergents from Miele's online store.

Programs	Miele UltraPhase 1/2	Miele Cap	Miele Cap	Miele Cap
Normal	✓	–	(F)	(H)
Wrinkle-free	✓	–	(F)	(H)
Delicates	✓	(A, B, C)	(F)	–
Sanitize	✓	–	(F)	(H)
Handwash	–	(A, D, E)	(F)	–
Dress Shirts	✓	–	(F)	(H)
QuickIntenseWash	✓	–	(F)	–
Express	✓	–	(F)	–
Darks/Denims	✓	–	(F)	–
Extra White	✓	–	(F)	(H)
Outdoor	–	(C)	–	–
Table Linens/Drapes	✓	–	(F)	(H)
Sportswear	–	(A)	–	–
Woolens	–	(D, E)	–	–
Silks	–	(E)	–	–
Proofing	–	–	(G)	–
Separate Rinse	–	–	(F)	–
Baby Clothes	✓	–	(F)	(H)
Towels	✓	–	(F)	(H)
Downs	–	(B)	–	–
Pillows	✓	–	–	–

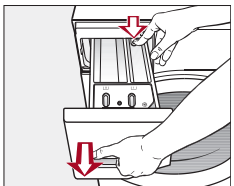
✓ = Recommended; – = Not recommended
(A) = Sportswear; (B) = Downs; (C) = Outdoor; (D) = WoolCare; (E) = SilkCare; (F) = Fabric Softener; (G) = Proofing; (H) = Booster

Cleaning and care

Cleaning the detergent dispensing drawer

Washing at low temperatures and the use of liquid detergent can lead to a build-up of bacteria in the detergent dispensing drawer.

- Clean the entire drawer at regular intervals for hygiene reasons, even if you are using the TwinDos system exclusively.

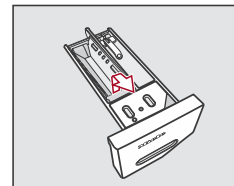


- Pull out the detergent dispenser drawer until a resistance is felt.

- Press down the release button and, at the same time, pull the drawer completely out of the machine.

Removing and cleaning the insert for liquid detergents

An insert for liquid detergents is located in the compartment of the detergent dispenser drawer.

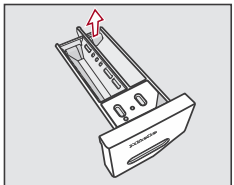
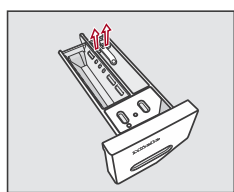


- Remove the insert. Clean the insert thoroughly with warm water.

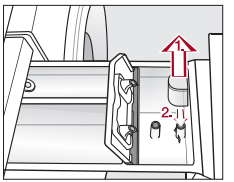
Cleaning the compartment

The compartment has a siphon for better dispensing of the chlorine bleach.

- Remove the release catch.



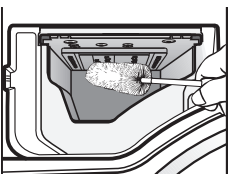
- Remove and clean the siphon.



- Pull the siphon out of the chamber

- Clean all parts and the detergent drawer with warm water.

Cleaning the detergent dispenser drawer housing



- Use a bottle brush to remove detergent residues and limescale from the jets inside the detergent dispenser drawer housing.

Cleaning the drum (Hygiene info)

Washing at low temperatures and/or using liquid detergents can cause bacteria and odors to build up in the washing machine. Use the Clean machine program to clean the washing machine. Note the message in the display:..

Sanitize info: Run a high temp. program or the "Clean Machine" program

Frequently asked questions

Some of the messages in the display are more than one line long. Touch the V or ^ sensor button to read them in full.

Message	Cause and solution
The display remains dark, and the Start/Stop sensor button does not light up or flash.	There is no power to the machine. <ul style="list-style-type: none">■ Check whether the plug is plugged in.■ Check whether the fuse has tripped. The washing machine has switched off automatically to save energy. <ul style="list-style-type: none">■ Turn the program selector to switch the washing machine on again.
Service Door lock fault F34	The door is not closed properly. The door lock could not engage. <ul style="list-style-type: none">■ Close the door again.■ Start the program again. If the fault message appears again, contact the Service department.
Water intake. See	The water inlet is blocked or restricted. <ul style="list-style-type: none">■ Check whether the water supply is turned on properly.■ Check whether the inlet hose is kinked.■ Check whether there is sufficient water pressure.
Drainage See	The filter in the water inlet is blocked. <ul style="list-style-type: none">■ Clean the filter (see the Operating Instructions). The drain is blocked or restricted. The drain hose has been fixed too high. <ul style="list-style-type: none">■ Clean the filter and the pump.■ Check whether the maximum delivery height of 3' 3" (1 m) has been exceeded.
Service Waterproof syst.	The water protection system has reacted. <ul style="list-style-type: none">■ Close the water supply.■ Contact Miele Service.
Service. Fault F	There is a fault. <ul style="list-style-type: none">■ Disconnect the washing machine from the power supply, either by unplugging the appliance or disconnecting it at the fuse.■ Wait at least 2 minutes before reconnecting the washing machine to the power supply■ Then switch the washing machine on again.■ Restart the program. If the fault message appears again, contact the Service department.
Service Door release fault F35	The door lock has jammed. <ul style="list-style-type: none">■ Contact the Service department.

Message	Cause and solution
TwinDos Care for compartment ① must be started. See	TwinDos or automatic dispensing via compartment ① and/or ② has not been used for a long time. It is possible that detergent has dried inside the hoses. <ul style="list-style-type: none">■ Carry out the TwinDos maintenance program immediately as described in "Cleaning and care – TwinDos maintenance".
Use "TwinDos" or start Care. See	TwinDos or automatic dispensing via compartment ① and/or ② has not been used for a long time. <ul style="list-style-type: none">■ Use TwinDos for one of your next wash cycles.■ Carry out the TwinDos maintenance program as described in "Cleaning and care – TwinDos maintenance".
Check filter + jet	The pumps are dirty. <ul style="list-style-type: none">■ Clean the pumps as described in "Frequently asked questions - Opening the door in the event of a blocked drain outlet and/or power failure" in the Operating Instructions.■ Start a wash program again after cleaning. The jet in the top of the door ring is blocked with lint. <ul style="list-style-type: none">■ Remove the lint with your finger. Do not use any sharp or pointed tools to do this.■ Start a wash program again after cleaning.
Check dosage	If the fault message appears again, contact the Service department. The washing machine can still be used but with reduced functionality. Excessive foam has built up during washing. <ul style="list-style-type: none">■ Check the amount of detergent dispensed.■ With automatic detergent dispensing, check the dispensing quantity set.■ Observe the instructions on the detergent packaging and the level of soiling on the laundry.■ If necessary, reduce the dispensing quantity by increments of 10%.
Sanitize info: Run a high temp. program or the "Clean Machine" program	A high temperature program has not been run for a long period of time. <ul style="list-style-type: none">■ Using the program selector setting <i>Additional programs</i>/ select the 'Clean machine' program in the Care submenu.■ Run the 'Clean machine' program using Miele clean machine or a universal powder detergent. The washing machine is cleaned which prevents bacteria and odor buildup.

To switch off the fault messages: Switch the washing machine off with the ① button. The messages will appear at the end of the program and when the washing machine is switched on, and need to be confirmed with the OK sensor button.

Miele

Quick Guide Washer



These short instructions are not a substitute for the Operating Instructions supplied with the appliance! Please read the Operating Instructions supplied with your washing machine before using it for the first time and take note of the IMPORTANT SAFETY INSTRUCTIONS, as well as the full descriptions on how to use your appliance.